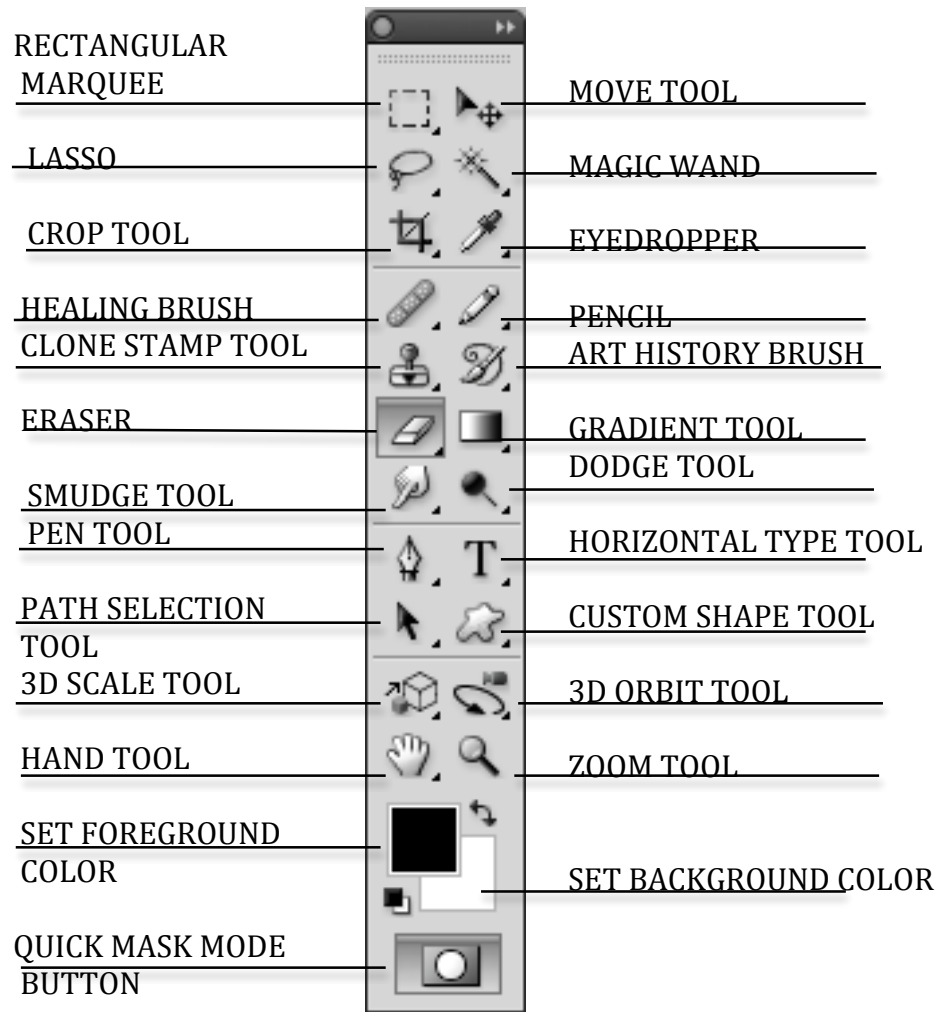


PHOTOSHOP CS 4 TOOLS PANEL



PHOTOSHOP TOOL DESCRIPTIONS And KEYBOARD SHORTCUTS

Hand Tool: Lets you scroll the document when it's too large to fit in the active window

Crop Tool: Lets you eliminate unwanted portions of an image.

Art History Brush: Paints with stylized strokes, using the source data from a specified history state or snapshot.

Rectangular Marquee: Lets you draw square or rectangular selection borders.

Eraser: Wipes away the image leaving only the background color.

Set Foreground Color: Use this to change the foreground color of a document.

Set Background Color: Use this to change the background color of a document.

Pencil: Changes selected pixels to the foreground color.

Gradient Tool: Lets you create a gradient between colors or custom gradients.

Healing Brush: Lets you copy an area and drag it across another area of an image to mix pixels and blend color tones in order to cover blemishes.

Custom Shape Tool: Lets you draw a variety of different shapes.

(contd)

Lasso: Lets you make a tight selection around an irregularly shaped object.

Path Selection Tool: A tool used for selecting paths when working with the Pen tool.

Dodge Tool: Lets you “hold back” exposure to a portion of an image.

Move Tool: Lets you move a selection without moving its contents.

Clone Stamp Tool: Paints a copy of a document from a point you choose to anywhere else in the document or in another document.

Smudge Tool: Simulates the action of running a finger through wet paint.

Eyedropper: Lets you pick up a color from the document.

Zoom Tool: Lets you reduce or enlarge your view of the document.

Magic Wand: Lets you select a consistently colored area without having to trace its outline.

Horizontal Type Tool: Lets you add horizontally aligned text to a document.

Pen Tool: Creates vector paths that can be converted into selections that in turn can be used to extract or mask groups of pixels.

Quick Mask Mode Button: Clicking on this will switch you to Quick Mask Mode. Clicking again returns you to standard mode.

KEYBOARD SHORTCUTS AND KEYSTROKES

***PLEASE NOTE: The following shortcuts are for those using Mac computers. If you are using a PC, you can usually use CONTROL in place of COMMAND and ALT in place of OPTION for these shortcuts.**

Undo: COMMAND-Z

Undo (repeatedly): COMMAND-OPTION-Z

Redo (repeatedly): COMMAND-SHIFT-Z

Select all: COMMAND-A

De-select: COMMAND-D

Copy: COMMAND-C

Paste: COMMAND-V

Resize Proportionally: SHIFT

Lasso Click Point: OPTION

Clone Stamp Sample: OPTION

Switch to Eyedropper: OPTION

Switch to Hand Tool: SPACE BAR

Add to a selection: SHIFT

New Document: COMMAND-N